

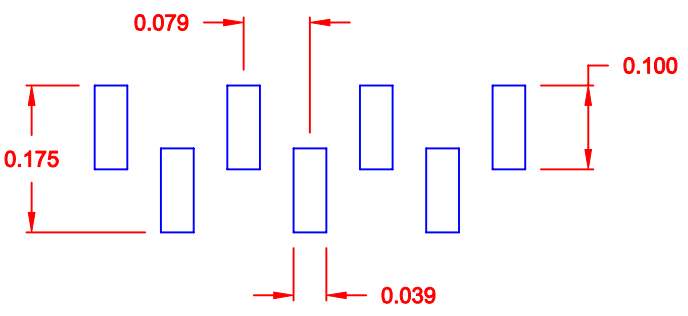
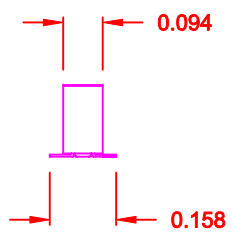
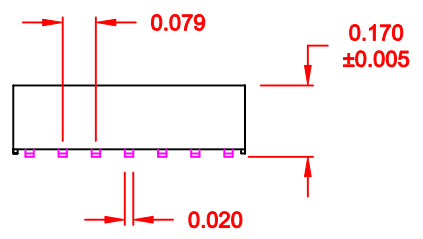
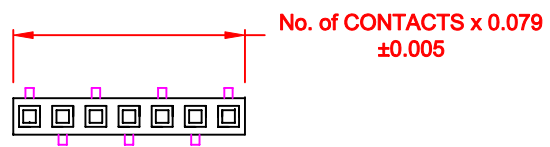
DESCRIPTION: 2MM RECEPTACLES

MATERIAL:

HOUSING: NYLON 6T, UL 94V-0, BLACK
 CONTACT: PHOSPHOR BRONZE
 PLATING: GOLD FLASH ENTIRE CONTACT

ELECTRICAL:

CURRENT RATING: 1 AMPS
 CONTACT RESISTANCE: 20mOHMS Max.
 INSULATOR RESISTANCE: 5,000MOHMS Min.
 DIELECTRIC WITHSTANDING: 500VAC
 OPERATING TEMPERATURE: -40° TO +105° C
 PROCESS TEMPERATURE: 260° C FOR 10 SECONDS



PCB LAYOUT

SCALE = 4 : 1

2863 YY 06 R P2

SERIES _____
 2863 = SINGLE ROW
 POSITIONS _____
 SINGLE - INCREMENTS OF 1
 (3 TO 40)
 TYPE _____
 06 = SURFACE MOUNT
 RoHS COMPLIANT _____
 HIGH TEMP.
 PLATING _____
 P2 = GOLD FLASH

DO NOT SCALE FROM DRAWING

	THESE DRAWINGS AND SPECIFICATIONS ARE THE PROPERTY OF NorComp AND SHALL NOT BE REPRODUCED, COPIED OR USED AS THE BASIS FOR THE MANUFACTURE OR SALE OF APPARATUS WITHOUT WRITTEN PERMISSION.		DRAWN: PAM JENKINS	DATE: 1-29-06
			CHECKED:	DATE:
NorComp		SCALE: 2 : 1	SHEET 1 OF 1	REV 4
		DWG NO. 2863YY06RP2		

RoHS COMPLIANT