

C27.4 Series CAPACITORS FOR MOTOR APPLICATIONS

Typical applications: the capacitor is used in series to the auxiliary winding of a single-phase motor, allowing it to start and increase its torque while working.
 Main application fields: low power electric motors, compressors.

Vendor part number: C274AC35200SA0J

Capacitance: 20 μ F
 Capacitance tolerance: \pm 5 %
 Class of operation: CLASS A-30.000 hours, 420Vac/25/085/21
 CLASS B-10.000 hours, 470Vac/25/085/21

Rated current: 2.95 A
 Max. dV/dt: 20 V/ μ s
 Can diameter: 45
 Can height: 74

General technical data

Reference standards: EN 60252-1: 2011/A1:2013
 Approvals: IMQ

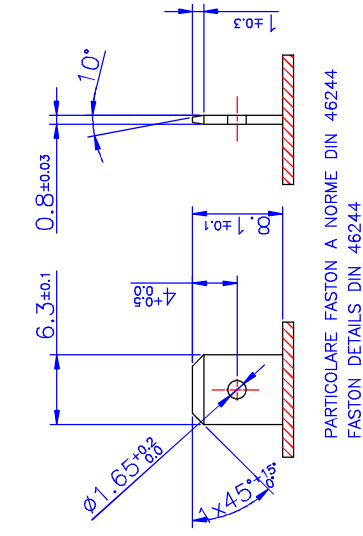
Type of Service: Continuous
 Operating Temperature: - 25 / +85 °C
 Storage Temperature: - 25 / +85 °C
 Rated voltage Vn (AC): 470 Vac
 Rated frequency (Hz): 50-60Hz
 Voltage rise/fall time(max): 20 V / μ sec
 Maximum Permissible Voltage: 1.10 x Rated Voltage
 Maximum Permissible Current: 1.30 x Rated Current
 Dissipation factor, TgD: 20 x 10E-4 at 20°C, 50 Hz
 Safety class: P0
 Maximum Altitude: No power derating applicable up to an altitude of 2200 meters.
 At higher altitudes than 2200 meters, please contact us for the Power derating

Mounting: Any position
 Dielectric: Polypropylene film

Filling Resin: Polyurethane Resin
 Plates: Self-healing metal layer
 Test voltage terminal-terminal: 2 Vn for 2 s
 Test voltage terminal-can: 2.000 Volt for 2 s
 Total Harmonic Distortion: Up to 10%
 Fire Load: 45 MJ/kg
 Discharge Resistor: 330 kOhm/2 Watts - internally assembled
 Vibration test: IEC 60068-2-6

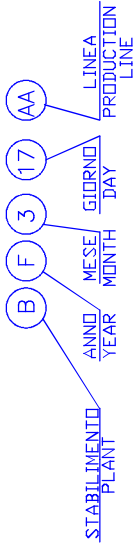
Can: Polypropylene with self-extinguishing features V2 (UL94)
 Disk: Polypropylene with self-extinguishing features V2 (UL94)

Terminals: **6.3 x 0.8 mm, Fast-on terminals according to DIN 46244-Tinned steel**
 Nut: M8 Zn coated steel UNI5589 - DIN 936
 Washer: \varnothing 8.4 mm. Zn coated steel DIN 6798

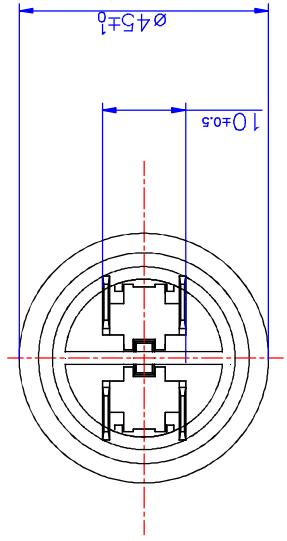
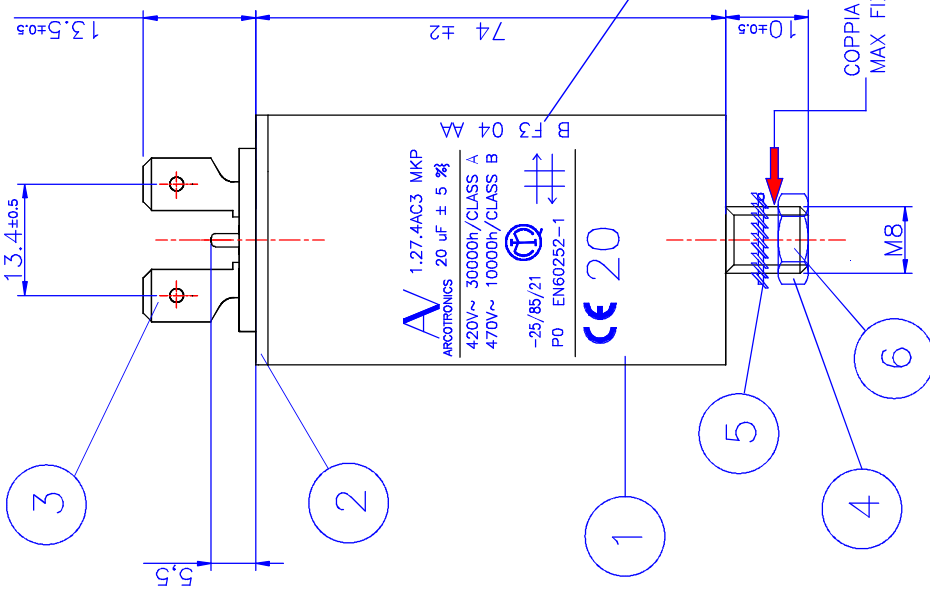


PARTICOLARE FASTON A NORME DIN 46244
FASTON DETAILS DIN 46244

ESEMPIO CODIFICA DATI DI IDENTIFICAZIONE NELLA TIMBRATURA
EXAMPLE OF IDENTIFICATION DIGIT IN THE MARKING



COPPIA DI SERRAGGIO
MAX FIXING TORQUE M8 BOLT 5Nm



6	CODULO FILETTATO M8x10 IN ALLUMINIO ALUMINIUM BOLT M8x10
5	RINDELLA 8.4 ACC. ZN. DIN 6798 WASHER A 8.4 DIN 6798 WHITE STEEL ZN
4	DADO M8 ACC. ZN. UNI 5588 DIN 934 NUT M8 UNI 5588 DIN 934 WHITE STEEL ZN
3	FASTON A NORME DIN 46244 ACC. ST. EL. UNI 50965 FASTON ACCORDING DIN STANDARDS 46244
2	DISCHETTO IN PA 66 AUTODESTIVO COLORE BEIGE DECK SELF-EXTINGUISH V0 PA 66 COLOUR BEIGE
1	CUSTODIA IN PP AUTODEST. V2 COLORE BIANCO RAL 9001-9010 POLYPROPYLENE CAN SELF-EXTINGUISH V2 COLOUR WHITE RAL 9001-9010
Pos.	MATERIALE
Note	PROGETTISTA : S.Milosheva
	FEBEC LIGHTING AND MOTOR CAPACITORS
	KEMET
	SCALA INDICATION ONLY
Q.I. CONDENSATORE SERIE C.27.4 FAST.DOPPIO. 6.3x0.8 CON CODOLO OVERALL DIMENSIONS CAP. C.27.4 SERIES Double Faston Execution 6.3x0.8 with bolt	
C274AC35200SA0J	

General Disclaimer

All product specifications, statements, information and data given herein are believed to be accurate and reliable, but are presented without guarantee, warranty, or responsibility of any kind, expressed or implied. Statements of suitability for certain applications are based on our knowledge of typical operating conditions for such applications, but are not intended to constitute – and we specifically disclaim – any warranty concerning suitability for a specific customer application or use. This Information is intended for use only by customers who have the requisite experience and capability to determine the correct products for their application.

Prototype Sample Disclaimer

All The Customer acknowledges the following limitations of the prototype samples:

- (1) Prototype samples are manufactured from preliminary designs and manufacturing processes; may not represent final designs; have not been released for commercial use and are not subject to the same quality control procedures applicable to released products.
- (2) Prototype samples are not qualified parts and are provided "as-is" by KEMET Electronics Corporation, which specifically disclaims any and all warranties and guarantees, explicit or implied, including, without limitation, the warranties of merchantability and fitness for a particular purpose or use.
- (3) Prototype samples are not intended for commercial use; are provided for engineering evaluation only and are not recommended for use in the Customer's production line. (4) The Customer assumes the risk of any and all uses that the Customer makes of the prototype samples.

Data sheet edition

The present data sheet replaces and supersedes any former one released by KEMET.

KEMET's product warranty is set forth at www.kemet.com under Terms and Conditions of Sale.

COPYRIGHT KEMET ELECTRONICS CORPORATION 2013, all rights reserved.